

# Original Art by Tim



Paintings, Photographic Art, Sketches  
December 2020 Collection

Tim Fotinos was raised and educated in, and retired to Colorado since 1994. Visiting his grandparent's farm inspired an interest in things that grow. The Apollo program inspired an interest in science. Tolkien inspired an interest in stories of imagination and the fantastic places adventurers visit. You may see these influences in his art.

Winter of 2020-21, the height of COVID, may be an odd time to launch a virtual gallery, but while brick and mortar galleries are the best way to view physical art, access is limited for the time being. Thus, this catalogue experiment. If you are seeing this catalogue on line, you also have other digital images to give you a better idea of what is available. If you have a printed catalogue, check out the website: [lastinnarts.com](http://lastinnarts.com).

If you live in Colorado Springs, Colorado and see a piece that interests you, contact Tim, via email ([fotinostim@gmail](mailto:fotinostim@gmail.com)) and he'll bring the item to a public spot near you where you can see it in person. For the immediate future sales are limited to the Colorado Springs area. For folks outside the area, let Tim know you have an interest and he'll contact you if shipping is practical. At this time I can accept cash and US postal money orders as payment.

# Sacred Oak

Acrylic over pencil and ink on paper

Scene in Mat



Structure & Celtic Whimsy



Scene (8 inch x 11 inch) includes the display matting  
(shown on easel) which is 16 in x 17in.

Lettering shown on the scene appears only in catalogue. This is original  
art, not a copy. \$400 for artwork and matte.

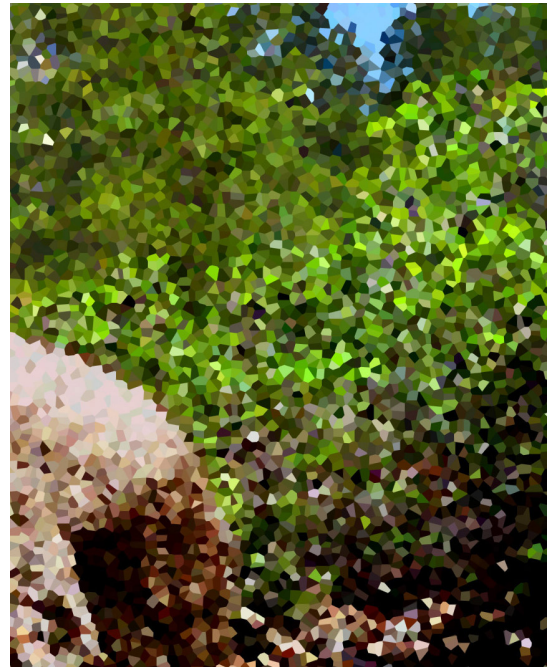
# Gem Falls

Photo Art poster backed with foam board, matted

Scene in Mat



Close up of "Stained Glass"



Scene (11.5 inch x 23 inch) includes the display matting (shown on easel) which is 17 in x 29 in. This is a single, signed print, no other copies will be made. \$225 for artwork and matting.

# Middle Earth from Colorado, South Slope

Photo poster backed with foam board – minor damage!

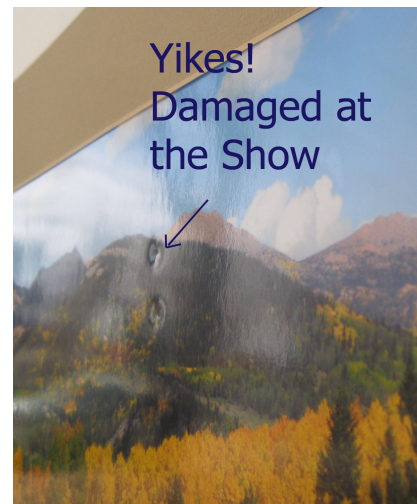


Scene in Mat



One of two signed prints of this photo. No others will be made.

Close up of damage



Scene (8 inch x 34 inch) includes the display matting (shown on easel) which is 13 in x 41 in. The scene is looking north at the south slopes of Pikes Peak. Lettering on the scene appears only in the catalogue.  
Was \$375, now marked down to \$195 for artwork and matte.

# Highway 67

Framed and double matted, printed on photographic paper

Scene in frame and matting



Scene is looking NORTH at the south slopes of Pikes Peak. There is no lettering on the actual photograph.



Scene is (3 inch x 18 inch). The outside dimension of the frame and matting (shown on bookshelf) is 9.5 in x 24 in. This is copy one of two prints, no other copies will be made. It is signed on the back frame cover. \$335 for framed artwork.

# If the Celts Conquered Colorado

Photocopy map on parchment paper, hand re-touched with paint and ink

Scene in frame, with zoom of fantasy Colorado map.

Close up of the Denver region of the map. This map was drawn in a medieval style based on the idea Celts began colonizing North America in the dark ages.



Scene (10.5 inch x 13.5 inch) includes the display matting (shown on easel) which is 21 in x 25 in. This is 1 of 3 signed prints, no other copies will be made. \$350 for framed artwork.

# Dolores to Telluride Road

Photograph panorama printed on poster paper

Full scene



Scene is looking east, road 145 is to the left. Trout Lake (not visible) is a few miles east. This series of photos cover about 135 degrees of view. The actual print has no lettering on it.



A detail of foreground shrubbery (left),  
blurred in the breeze.

The overall scene has been slightly flattened for  
more comfortable viewing.

Print is 300+ dpi resolution.

Scene is 8 inches x 40 inches, signed copy 1 of 2, no others will be made.  
\$325 for poster print.



# Billowing Orange

Photo on, single 2 x 3 ft print on poster paper.

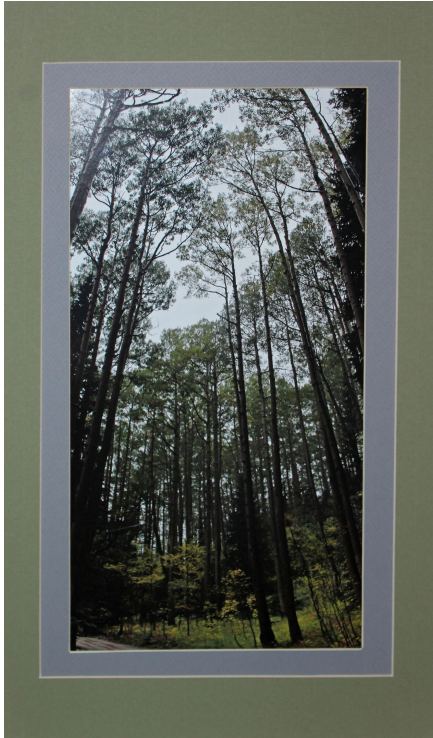


Scene is 24 inches by 36 inches. This is the only signed print on poster paper at this size. One other print will be made on photographic paper at the same size and no other copies will be made at this size or larger. \$2000 for the photo quality print (which, when available, will be framed).  
or \$600 for poster print.

# Rainy Day Aspen

Photo on photographic paper, double matted.

Scene in Mat



A last drink before winter



Scene (7 1/2 inch x 14 3/8 inch) is matted, outer dimension (11 1/4 in x 19 3/8 in). On a cold rainy day in the Ophir Valley of Colorado, the Aspen seemed protective and menacing at the same time.

This is signed copy 1 of 2, no other copies will be made. \$303 for artwork and mattes.

# A Day After Snow

Photo on glossy photographic paper, double matted.

Scene in Mat



Zoom-in, left of center



Scene (9 5/8 inch x 23 1/8 inch) is double matted, outer dimension of mats is about 16 in x 28 in). The photo was taken the day after a snow and sleet day in the Ophir Valley of Colorado.

This is signed copy 1 of 2, no other copies will be made. \$395 for artwork and mattes.

# October's Spring Day

Photo on canvas photographic paper, double matted.

Scene in Mat



Zoom-in, top left of photo



Scene (7 1/2 inch x 14 1/4 inch) is double matted, outer dimension of mats is about 14 in x 21 in. The photo was taken the day after a snow and sleet day in the Ophir Valley of Colorado. The colors are curiously more spring than autumn, when the photo was taken.

This is signed copy 1 of 2, no other copies will be made. \$275 for artwork and mattes.

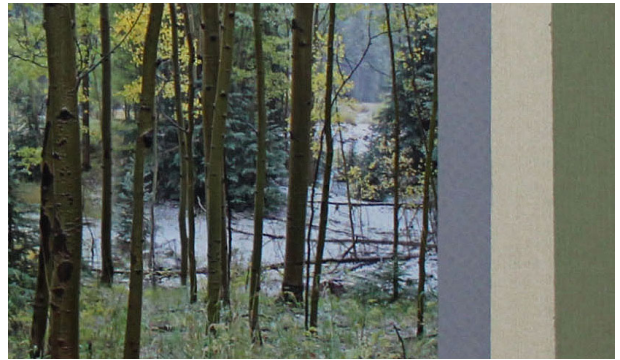
# First Snow of Fall

Printed on photographic paper, triple matted.



Colorado mountains can go from sun to sleet quickly. On this day it began partly cloudy, to sleet, to snow.

The close up below is from the center right of the scene.



Scene is 9 5/8 inch by 7 1/2 inches. It is matted and the outer dimensions are 15 3/4 by 14 inches. It is one of two signed prints. One other print will be made on photographic paper at the same size or larger and no others will be made.

\$345 for this print and mattes.

# Waterfalls, Acrylic on canvas, framed

Scene in frame



The acrylic is a reimagining of a watercolor painting done by me 4 decades prior. For comparison, both paintings are shown here.

Detail zoom



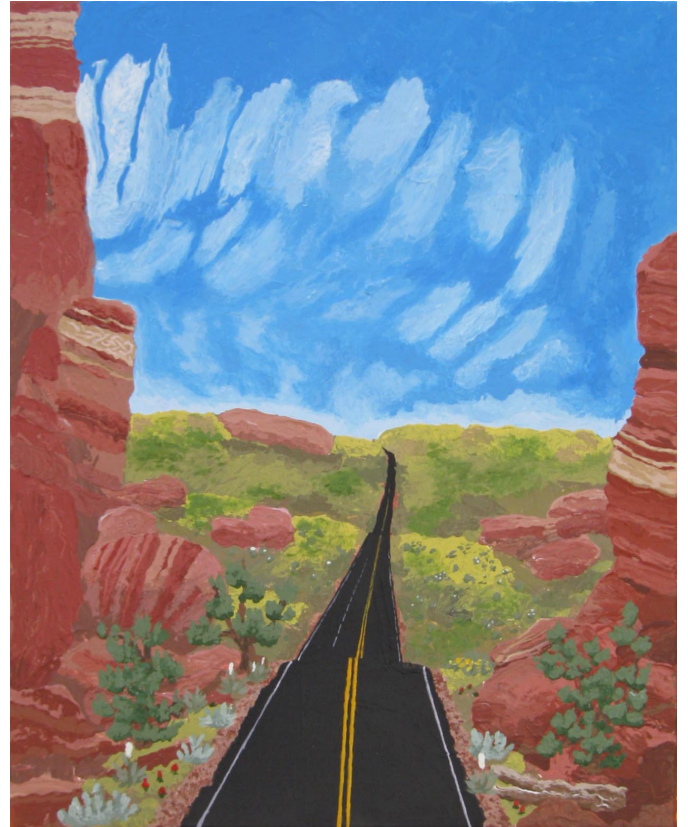
Scene (18 inch x 27 inch) is framed, outer dimensions 21 in x 27 in. This is an original painting, no more than five prints will ever be made. \$1650 for the framed acrylic painting. The watercolor (also framed) is not for sale alone but can be bought as a set with the acrylic for \$3,800.

# New Mexico Colors

Traditional style acrylic on canvas



Encaustic style acrylic on canvas



Both scenes (16 inch x 20 inch) are acrylic on canvas, inspired by a pass through red rocks in New Mexico travelled through about 30 years before. One is a more traditional interpretation (left) the other an encaustic style (right). These are original paintings, no more than five prints will ever be made of either. The paintings sell for \$1150 each, or the set of two for \$2021.

# A Word of Creation

Acrylic on canvas



Mountain clouds can assume fantastic shapes. Here the sky near Victor Colorado provided inspiration for this 2 ft x 3 ft original painting (not matted or framed). The Celtic knot is a classic design. \$1650.